



ALLISON MCGRAW • LACI BROCK
AMANDA STADERMANN • ZARAH BROWN • TYLER MENG

DEPARTMENT OF PLANETARY SCIENCE • LUNAR & PLANETARY LABORATORY • UNIVERSITY OF ARIZONA

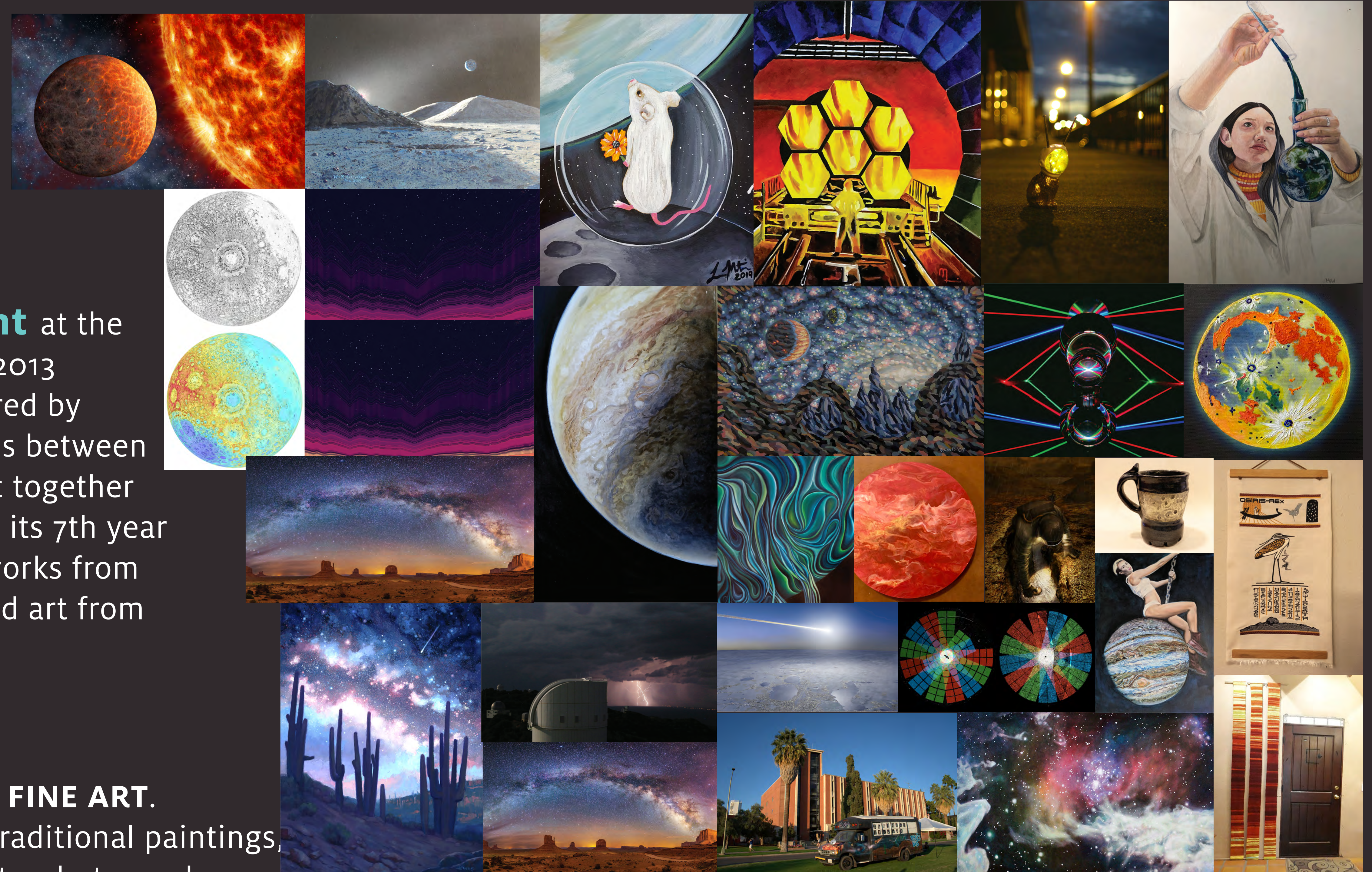
AN EXHIBITION OF ART CREATED FROM AND INSPIRED
BY THE SCIENTIFIC DATA WE USE TO EXPLORE THE SOLAR SYSTEM

INTRODUCTION

The Art of Planetary Science (TAPS) is a **graduate student-run event** at the University of Arizona's Lunar & Planetary Laboratory (LPL). TAPS began in 2013 as a one night art exhibition and competition displaying works of art inspired by planetary science and space. The goal of the event was to build connections between the local art and scientific communities of Tucson and to engage the public together in a celebration of the beauty and elegance of the universe. TAPS is now in its 7th year and has evolved into a larger 3-day event. Each year the exhibition hosts works from 100+ artists who contribute over 200 pieces of planetary and space-themed art from around the world.

EVENT STRUCTURE

There are two main categories artists can submit pieces to: **DATA ART** and **FINE ART**. Artworks submitted to the show include a vast range of mediums such as traditional paintings, jewelry & metal art, sculpture/glasswork, digital illustration, short films, astrophotography, and even art created from scientific data.



TEAM ORGANIZATION:

The event was initially conceptualized and organized by 2 LPL PhD candidates as a voluntary EPO project. Now, a core team of graduate students run the event each year with the help of volunteers and the department. Organizing each TAPS show takes months of preparation.

CALL TO ARTISTS:

We begin advertizing to artists ~4 months before the actual event by posting flyers, running ads in the local newspaper, and sending emails to listserves. The event is heavily promoted across the UA campus & social media.

DISPLAYING ART:

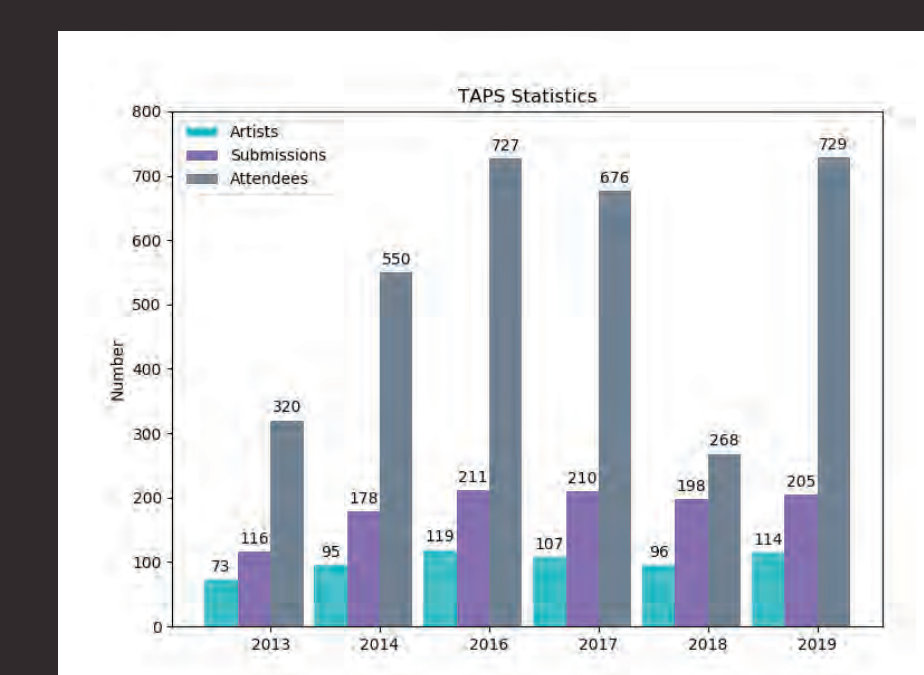
Submitting art to be included in the show is free and open to anyone who is interested. Artists submit their pieces for consideration through our website. The core TAPS team juries art to decide what pieces will be displayed in the show based on availability of space. We arrange and hang art on 3 floors during the show using display boards and easels.

PARTNERSHIPS:

TAPS seeks out collaborations with local businesses and members of the Tucson community that grow and evolve each year. These partnerships have included those with local musicians, artists, and NASA astronauts. Past partnerships include Tucson Museum of Art, Flandrau Planetarium, and Borderlands Brewing Company.

EVENT RECEPTION

The response to the show has been overwhelmingly positive. The figure below shows the number of attendees, participating artists, and pieces of art featured at TAPS over the past several years. The success of TAPS continue to pave the way for future engagements between science + art. *2018 attendance data is only for one night of attendance.



FUTURE SHOW

LPL and the TAPS team are pleased to announce the 7th annual show is planned for Fall 2020 and will coincide with **NASA's International Observe the Moon Night** (September 26th, 2020). We will be inacting a theme for our 2020 show for the first time within the exhibition and encourage artists to submit science fiction-themed or Moon-themed art. The theme for our 2020 show encapsulates the previous decades of space exploration. Submissions will open June 15 - August 15th, 2020 and are hosted through our website.

For more information, follow us on social media and visit www.lpl.arizona.edu/art



@artofptys • art@lpl.arizona.edu

Donate Here

