

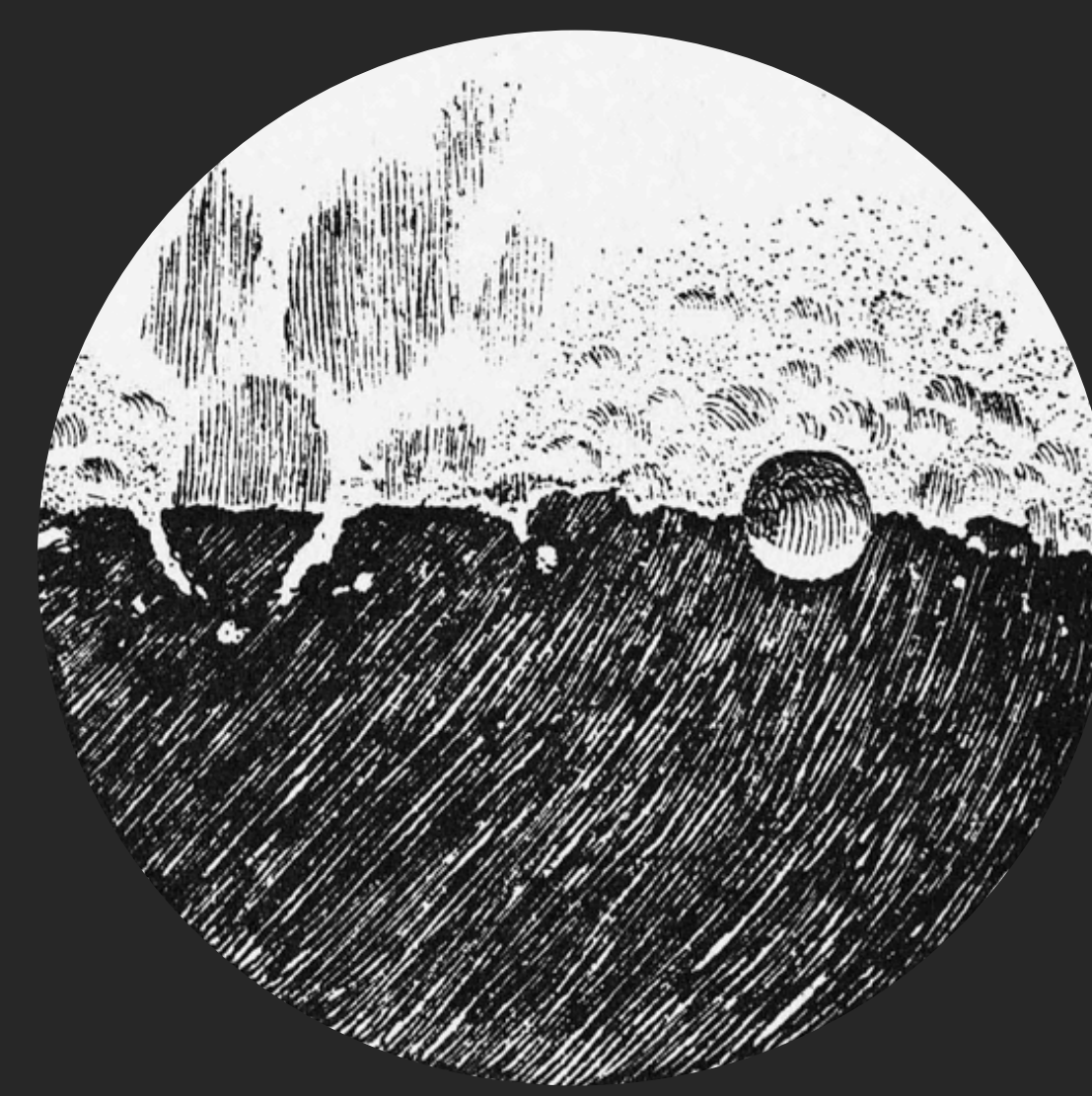
# THE ART OF PLANETARY SCIENCE

THE EXHIBITION

JAMIE MOLARO, JAMES KEANE, SARAH PEACOCK,  
HANNAH TANQUARY, ETHAN SCHAEFER

DEPARTMENT OF PLANETARY SCIENCE - LUNAR AND PLANETARY LABORATORY - UNIVERSITY OF ARIZONA

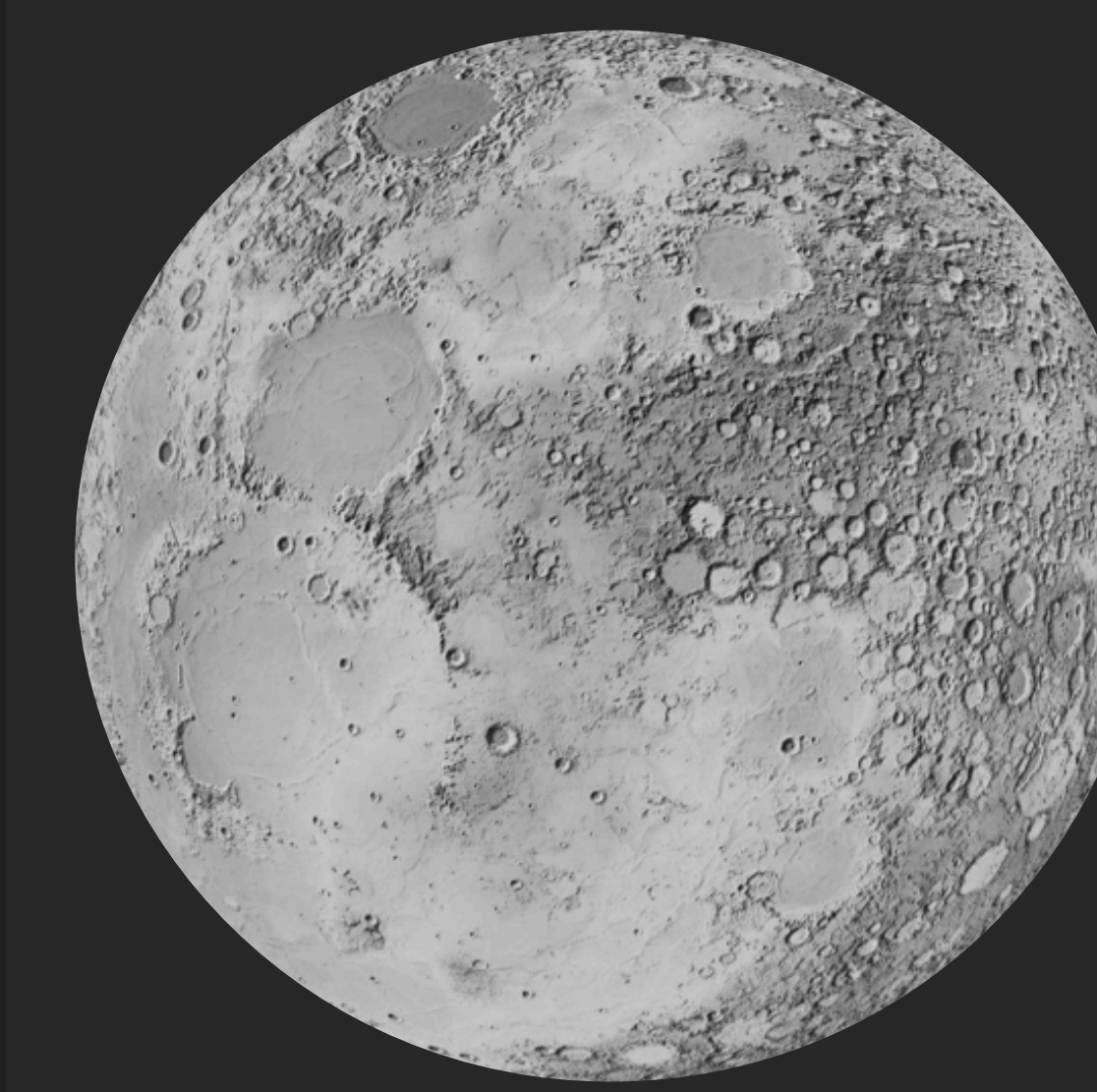
contact: [jmolaro@lpl.arizona.edu](mailto:jmolaro@lpl.arizona.edu)



ART



IMAGES



DATA

An exhibition of art, created from and inspired by the scientific data that we use to explore the solar system

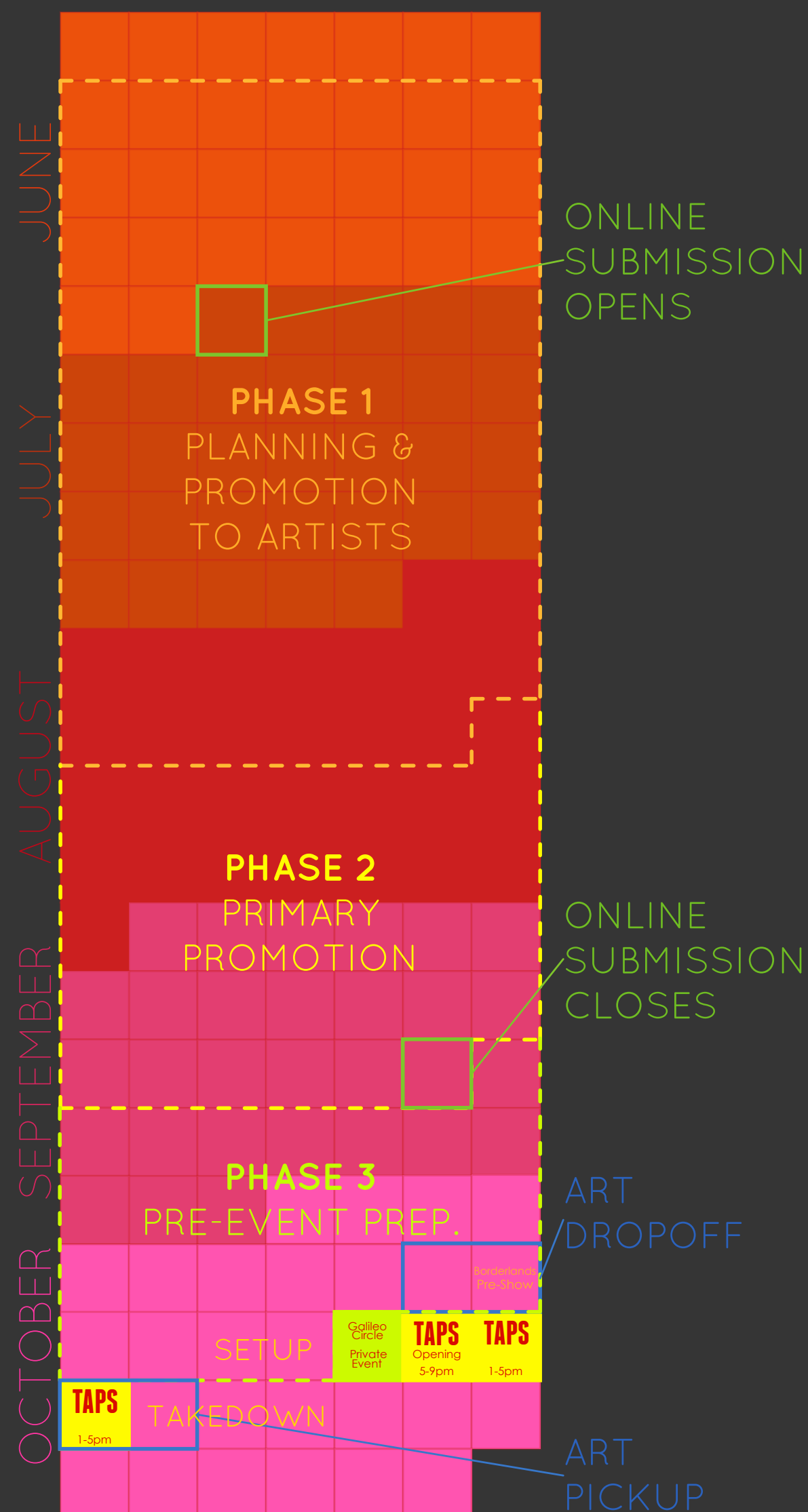
## INTRODUCTION

On October 17th, 2014, the University of Arizona's Lunar and Planetary Laboratory (LPL) presented The Art of Planetary Science: An Exhibition (TAPS). This was a three day art exhibition and competition displaying works of art inspired by planetary science, alongside works created from scientific data. The goal of this event was to build community between the local art and science communities of Tucson, and to engage the public together in a celebration of the beauty and elegance of the universe.

Part of the purpose of the event was to present a different side of science to the public. The public often sees science as dull, boring, and clinical. In reality, however, science is full of beauty and elegance, and the practice of creating scientific knowledge requires an enormous amount of creativity. The event provided scientists the opportunity to show this to the public, by creating art out of science and their scientific data. These works utilized, for example, equations, simulations, visual representations of spacecraft data and a scientific concepts, and images of extra-terrestrial rock and dust samples. Viewing these works of art alongside more traditional artwork inspired by those same scientific ideas provided the audience with a more complex, multifaceted view of the content that would not be possible viewing either alone.

## EVENT ORGANIZATION

### EVENT SCHEDULE



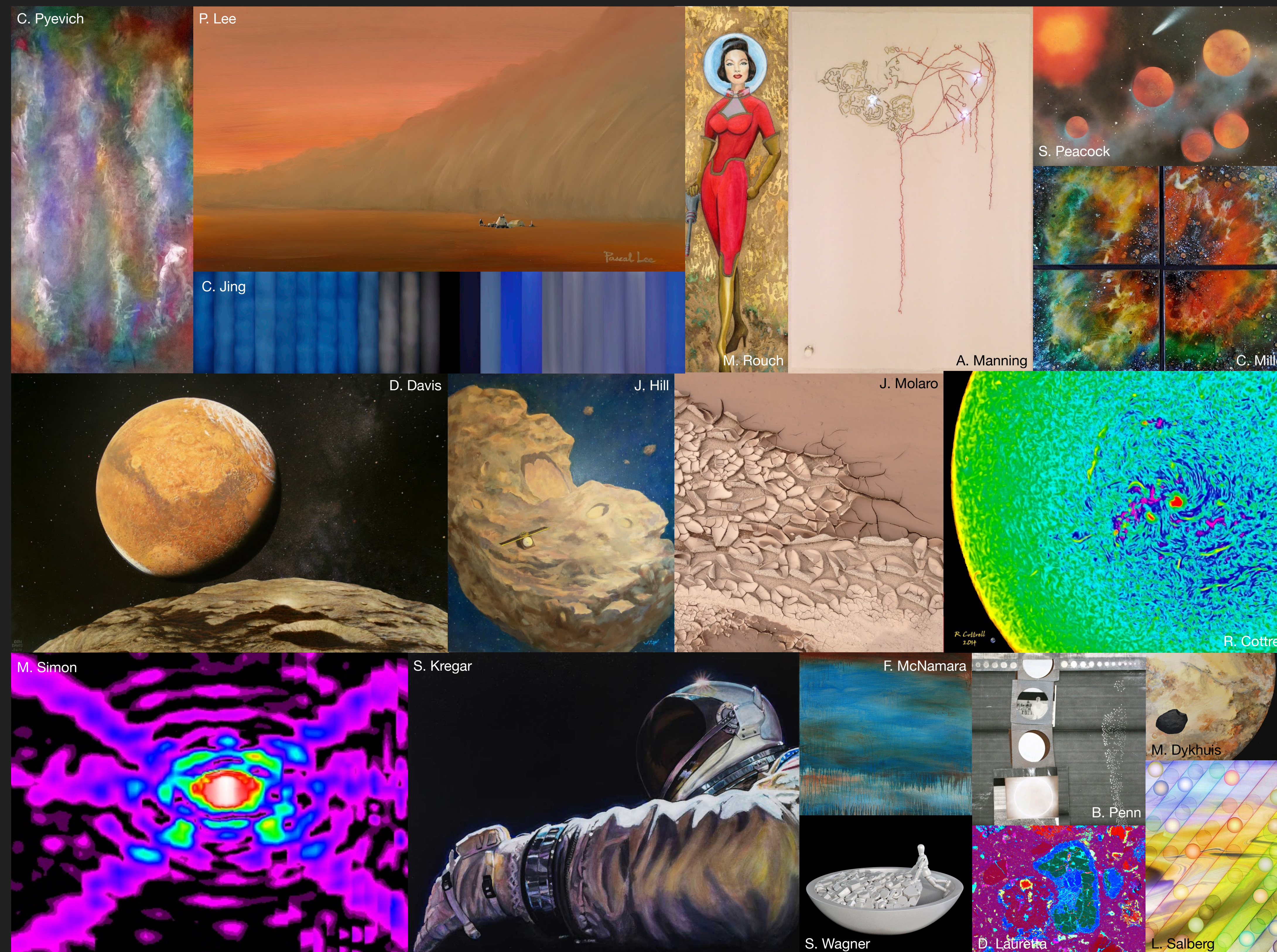
**TAPS TEAM STRUCTURE:** The event was conceptualized and organized by five LPL Ph.D. candidates as a voluntary EPO project, and was successful with the help of a staff member from LPL's Space Imaging Center, and the volunteer support of other LPL graduate students.

**CALL TO ARTISTS & SCIENTISTS:** We began advertising the event to artists and scientists three months before the art show. This was accomplished by posting the call to artists in online calendars, local newspapers, and sending it to email listservs used by local artists. Flyers were posted in local art stores, bookstores, coffee shops, art galleries, and museums (many of whom also donated prizes for the art competition). The event was also heavily promoted to the University of Arizona.

**ACQUIRING & DISPLAYING THE ART:** A website for the event was set up with an online submission form for interested artists and scientists to submit work for consideration, free of charge. LPL was able to accommodate accepting all submitted artwork. Once physically received, the TAPS team arranged and hung the art throughout the LPL building using display boards and easels owned by LPL.

**TARGET AUDIENCE:** In contrast to most EPO events, this event was specifically designed to reach out to adults in the community, and raise awareness about the value and importance of planetary science and astronomy to society. Additionally, the event was designed to reach out to the art community, a group of people that is often less aware of, or interested in, the sciences.

**TAPS PARTNERSHIPS:** Prior to the event, the TAPS team held a pre-show at a local brewery, Borderlands Brewing Company (BBC), where they showed artwork from the previous year. The team was also able to collaborate with the Tucson Museum of Art (TMA), and a local brewers organization, Craft Tucson, on their event: Art on Tap: Art, Music, and Beer Fest. The winners of the TAPS competition and select works will be featured at Art on Tap, later this year (December 6th). These events provided LPL, BBC and the TMA unique opportunities to work together to engage the public in art and science, and provide artists with more than one opportunity to display their work.



## EVENT RECEPTION

The second annual exhibition was extremely successful – displaying over 200 works of art, from 90 artists and scientists, and drawing an audience of more than 800 art and science enthusiasts.

The response from the art community was overwhelmingly positive. Many artists expressed their enthusiasm for exploring planetary science and astronomy as a theme, getting the chance to interact with and meet scientists, and having an additional venue (and audience) in which to display their work. The scientists who participated were equally interested in seeing local art, meeting artists, and promoting the beauty of science.

## FUTURE DEVELOPMENT

The success of the second TAPS exhibition has paved the way for future art and science collaboration and engagement.

LPL and the TAPS team are pleased to announce the third annual The Art of Planetary Science: An Exhibition – planned for Fall 2015. For more information, visit [www.lpl.arizona.edu/art](http://www.lpl.arizona.edu/art).